

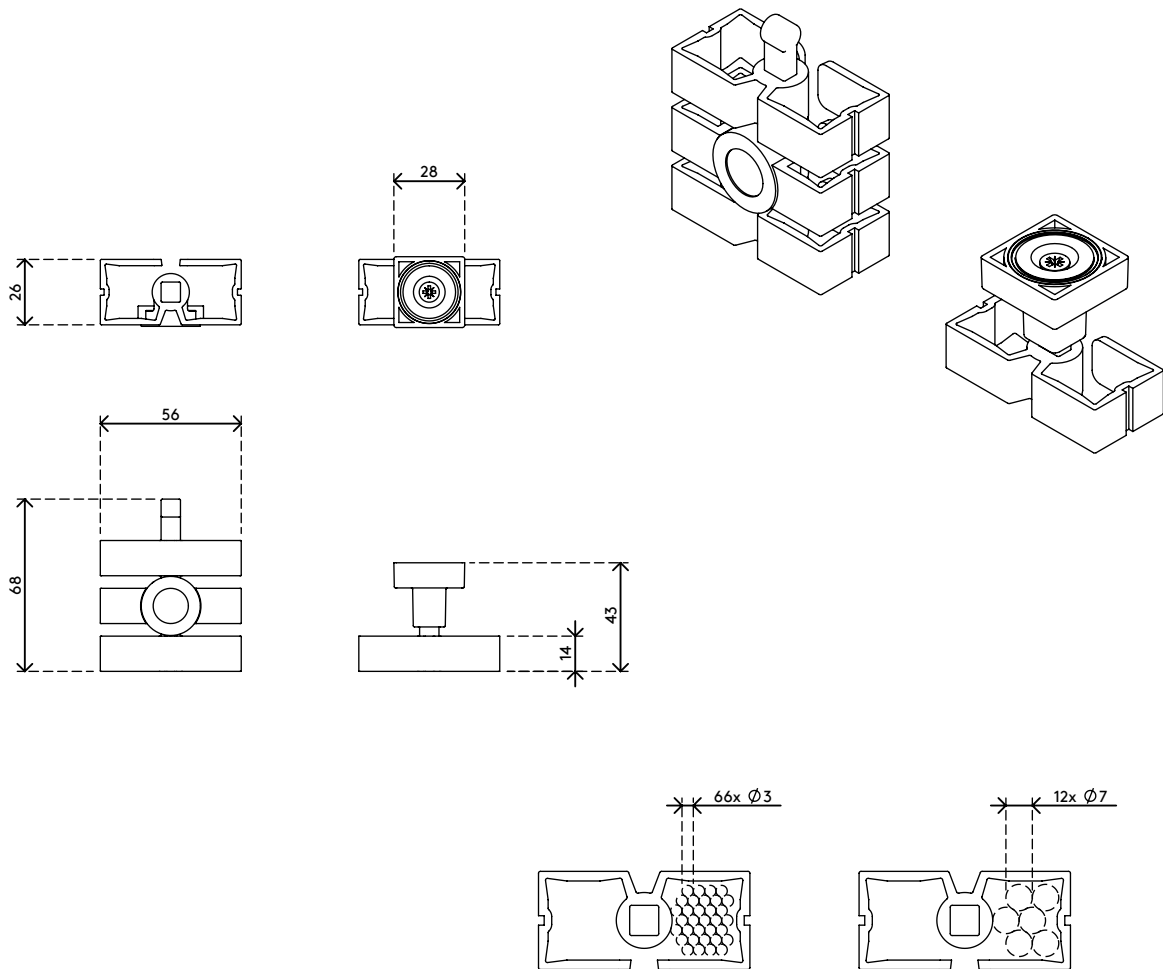
34.380

# Addit cable worm sit-stand - magnetic mounting set 380

The magnetic mounting set installs the Addit cable worm sit-stand without wasting time with screws. It simply attaches magnetically to a metal support under the desktop. For desks with metal legs or traverses, the mounting set comes complete with a magnetic mid-element that can be added to the cable worm sit-stand to neatly guide it via a metal leg/traverse.

Attention: Addit cable worm sit-stand 370 not included


- Mounting set for Addit cable worm sit-stand
- Magnetic mounting via top and mid-elements
- Improves cable worm guidance
- For use on desks where screw installation isn't possible



Addit cable worm sit-stand - magnetic mounting set 380


2020/10/06


# 34.380

 182 x 125 x 30 mm

 1 pcs

 white

 0,090 kg

 805410343804