

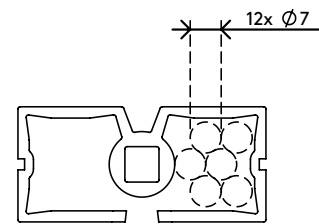
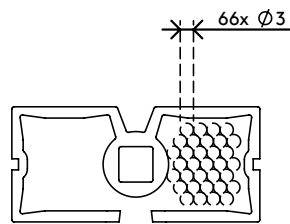
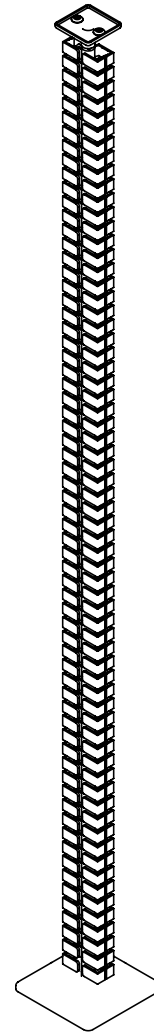
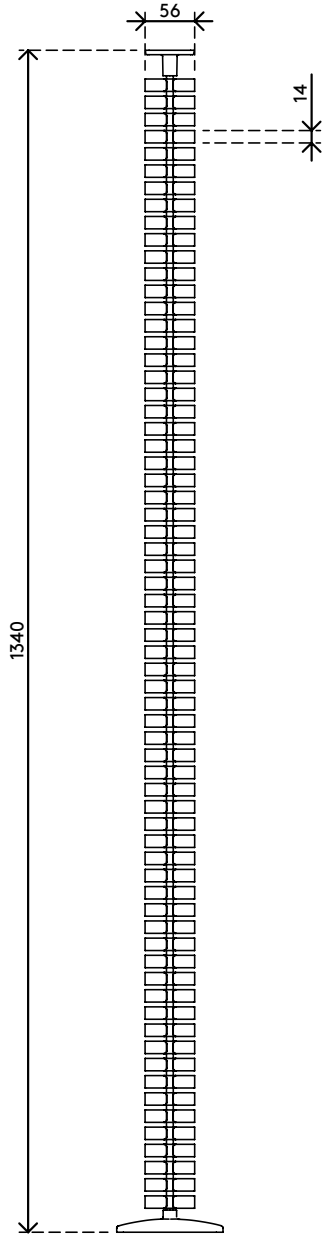
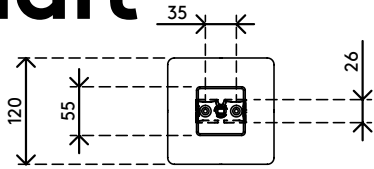
34.370

## Addit cable worm sit-stand 370

The Addit cable worm sit-stand tidies away your cables and guides them from desktop to floor. The ingenious rectangular design means the worm doesn't twist, but follows a controlled downward path to the floor, where a weighted floor plate ensures it remains straight and stable. This makes it ideal for sit-stand workstations up to 127cm high. The Addit cable worm sit-stand helps create an uncluttered atmosphere and a safe work environment: a neat solution in every sense.

- Tidies and bundles below-desk cables
- Length: 1340 mm
- Suitable for sit-stand desks up to 1270 mm
- Easy to adjust by adding/removing elements
- Weighted floor plate for stability
- Suitable for 12 cables up to 7mm thick
- Available in 3 colours: silver, white or black
- Combinable with magnetic mounting set 34.380 for desks with metal traverses/legs


# addit



## Addit cable worm sit-stand 370


2018/11/29


# 34.370

 370 x 290 x 62 mm

 1 pcs

 white

 0,845 kg

 805410343705