



Beyond chairs and desks

Complement your working environment
with ergonomic computer workplace accessories.

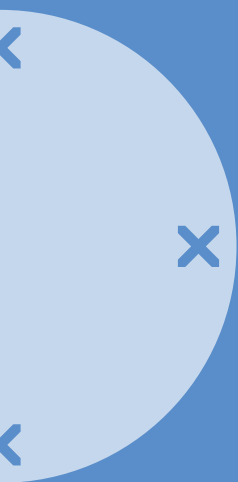
dataflex

feeling at work

Feeling at work

For over 35 years, Dataflex has specialised in making ergonomic monitor arms and other workplace accessories. High quality products for every budget that help you create a comfortable, healthy and inspiring workplace. So where you work is also somewhere that you feel at home. We call it feeling at work.

Developed with a serious commitment to sustainable production methods, our collections achieve the optimal balance between functionality, design and price. And because we never compromise on quality, we've won international recognition and prizes for both the technical standard of our products and for their stylish, contemporary design.



A reliable, knowledgeable partner.

We believe in lasting relationships with clients and partners. So we're more than happy to provide any advice, service or support we can to make your life easier. From efficient stock management that helps you serve your customers better to tips on configuring an ergonomic workstation, we're here to help. It's that simple.

Sustainable and transparent.

We want to do our bit for a sustainable planet. We also try hard to be transparent at all times, and to operate with integrity and respect for society and the environment. And we like to work with partners who feel the same way.

Young, dynamic... and experienced.

Dataflex's high technical standards are built on more than three decades of specialisation. It's earned us ISO quality assurance certificates for product development, production, assembly, sales and supply processes. But our approach remains youthful and energetic. Our fresh designs have won us several honours, including the prestigious Red Dot and IF awards.



Dataflex is a carbon neutral company



Dataflex is an ISO 9001 and 14001 certified company



A collection for every customer

We have five collections. Four core collections, geared to different budgets. Each with a comprehensive offering of monitor arms, toolbars, computer holders and docking stations. From the refined and elegant Viewprime, versatile, designer Viewlite to the no-nonsense, durable Viewmate and playful, value-for-money Viewgo. And finally, the Addit collection, a range of complementary accessories to complete your perfect workplace.

Our offer

People in every kind of business setting swear by our solutions. We've carefully arranged our wide offering in such a way that you can quickly find the solution that's just right for you.

Check out our website www.dataflex-int.com for all tools and possibilities.





viewprime^x

Superior
usability
through
engineering
finesse



Refined adjustability
Unparalleled agility
Elegant design



viewlite^x

Designed for
tomorrow's
change



World class design
Futureproof
Sustainable



viewmate^x

No-nonsense
in every
setting



Hassle-free
Cost effective
Durable



viewgo^x

Playful looks,
serious value



Different
Smart
Simple



addit^x

So good
you forget
it's there



Finest materials
Refined stability
Complete reliability

viewprime^x

Superior usability through engineering finesse



Refined adjustability
Unparalleled agility
Elegant design

Viewprime answers the call from organizations and users for more freedom of movement and adjustment options, while saving as much space as possible. High-quality workmanship and thoughtful design for connoisseurs, superior usability and simplicity for everyone. Viewprime ticks all your boxes.



reddot winner 2020

dataflex







Monitor arms

Great looks aren't worth anything if the quality isn't of the highest standard. A Viewprime monitor arm moves smoothly and precisely, while being stable and sturdy when untouched. A high-end gas spring and precision engineered joints make the Viewprime not only a pleasure to look at, but a joy to use as well.





The benefits of Viewprime

- Suitable for every office environment
 - Precise fingertip height adjustment
 - Built-in gas spring
 - Refined design looks great in any setting
 - Great range of weight capacity
 - Height adjustment range makes Viewprime perfect for use with touchscreens
 - Monitor sliders make the arm perfect for use with partition walls and a great range of screen sizes (dual version only)
-

viewlite^x

Designed for tomorrow's change



World class design
Futureproof
Sustainable

Viewlite's many top design honours include a Red Dot and IF award. This collection fits subtly into any office design and continues to meet your needs, even when your workspace or requirements change. You can adapt products to accommodate anything from smaller technology to changing work practices. Also designed to minimise environmental impact, Viewlite is your answer to a world that never stands still.



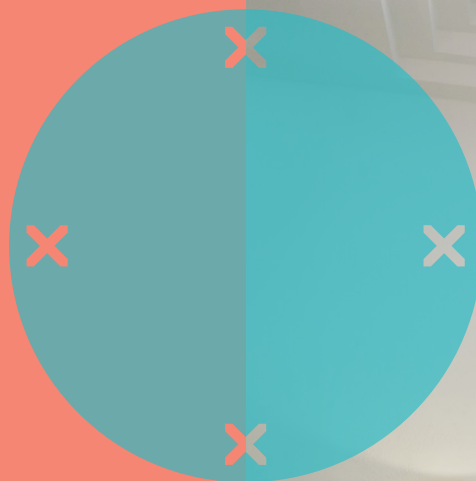
reddot design award
honourable mention 2012



product
design award

2013 ■

dataflex







Monitor arms

With its wide variety of interchangeable parts, the lightweight modular system gives every organisation the flexibility to tailor the ideal solution for their needs, which contributes to a healthier, happier, more productive workplace. You can also go on reconfiguring the system to meet the changing IT or layout needs of your office and evolving requirements of your business. These monitor arms are 100% recyclable and 40% of the aluminium we use has already been recycled when we get it. So you're doing your bit for the environment, too.







Toolbars

These space-saving toolbars not only elegantly delineate between workplaces and support clean-desk policies, they also let you personalise and organise your workspace, and keep it clutter-free.



Computer holders

Suspended under your desktop from a choice of low or high mounting brackets, the holder is easy to mount vertically or horizontally under nearly any desktop surface, whatever your support beam system. Adjustable sliding parts mean it neatly encases a computer of any size. 100% recyclable and designed for disassembly.



The Viewlite Plus monitor arm is designed to be flexible and futureproof. It supports practically any monitor, and you can add additional optional mounts for a dual arm or a tablet. Desk sharing is also no problem, as the Viewlite monitor arm it can be continually adjusted and repositioned to accommodate people of any shape or size, whatever their ergonomic requirements.

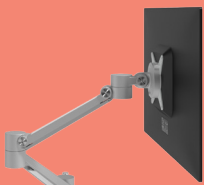
The multiple award-winning design (including Red Dot and IF awards) combines superb ergonomics with strength, durability, attention-to-detail and a minimised environmental footprint.

Viewlite plus

Flexible, fashionable
and future-proof.



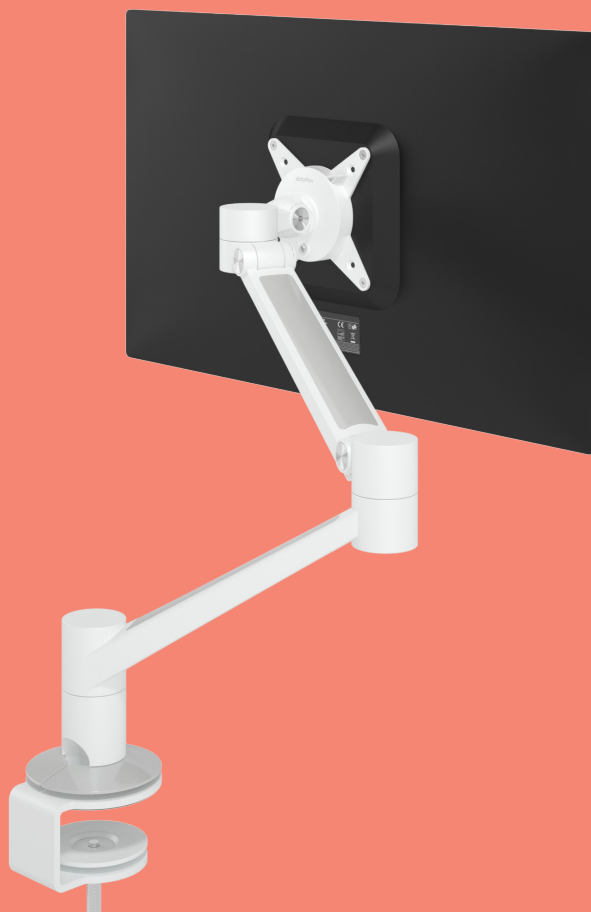
Integrated cable management



Expandable to dual screen version



Available in silver, white and black





Benefits

- Increases productivity and employee wellbeing
- Great for flexible workspaces and sit-stand desks
- Helps to prevent workstation related health complaints
- Future-proof, scalable and upgradable
- Elegant design looks great in any office interior
- Easy to use and maintenance-free
- Suitable for even the lightest device!
- Hassle-free installation, saving time and money
- Compatible with the entire Viewlite collection

Features

- Made from 40% recycled aluminium
- Can also support a notebook or tablet
- Fitted with a practical quick-release VESA system
- Dynamic height adjustment range of 240 mm
- Weight capacity min. 0 kg - max. 7 kg per monitor
- Independent depth adjustment
- Integrated cable management
- Available in silver, white and black

For more information go to: www.dataflex-int.com/en/Viewlite

viewmate^x

No-nonsense in every setting



Hassle-free
Cost effective
Durable

A no-nonsense, cost-effective collection equally happy in an office or industrial setting. From the wide, largely interchangeable product range to the heavy duty steel construction, if you're looking for a cost-effective hassle-free solution, Viewmate is for you. Most products are modular, configurable and upgradable; giving you the perfect combination of affordability and durability.







Monitor arms

Made from heavy-duty steel, and both upgradable and configurable, these monitor arms will last and last. Easy to install and adjust, they're also good news ergonomically. Most models are shipped with desk clamp, bolt-through desk, base plate, ceiling or wall mount.



Toolbars

A sturdy, cost-effective yet stylish solution for a tidy workspace that's also adjustable, so it meets your ergonomic requirements, too.

Providing a reliable, no-nonsense answer to even the roughest working environment.



Workstations

With their robust heavy-duty steel construction, Viewmate workstations can withstand the knocks they'll inevitably get during a long working life. They're also easy to install and adjust, and exceptionally good value-for-money. A modern solution for a modern office or industrial environment.



Computer holders

They have a high adjustment range, making them suitable for multiple form factors. All Viewmate computer holders are also theft-retardant, and the lockable security models completely anti-theft. This is a cost-effective solution that could save you more than just money.



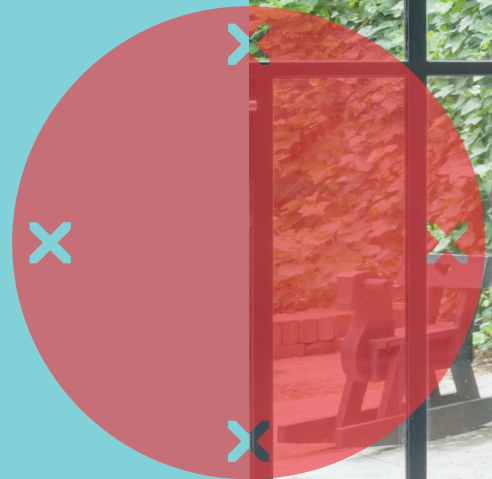
viewgo^x

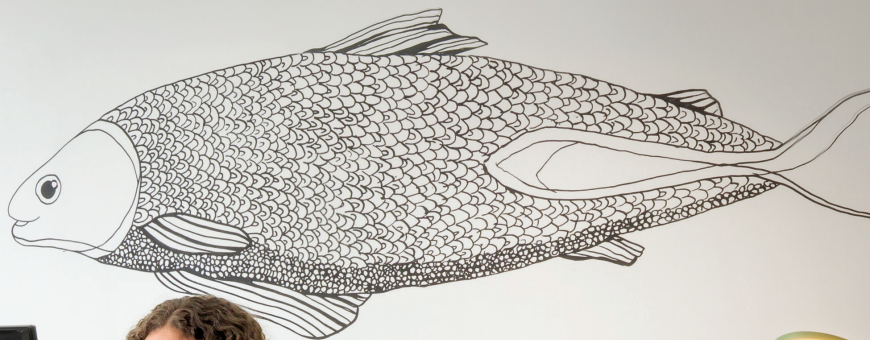
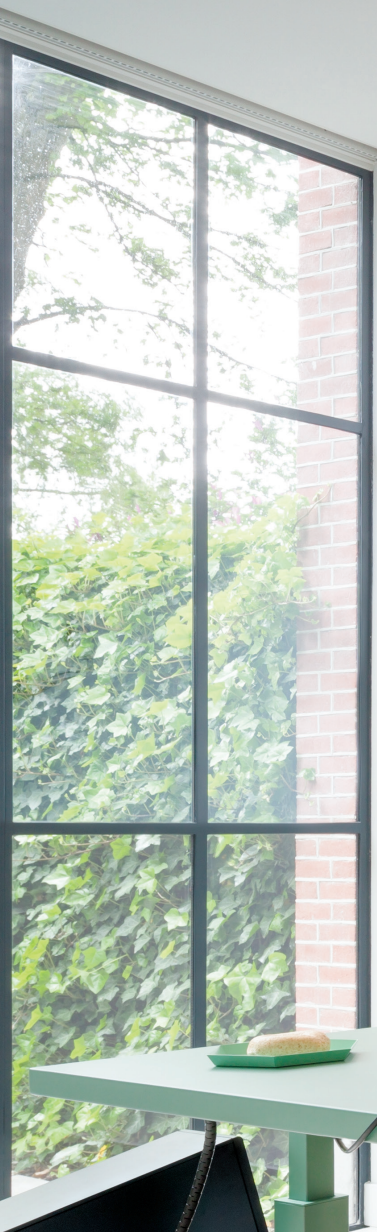
Playful looks, serious value



Different Smart Simple

— This may be our entry-level collection, but that doesn't mean you have to compromise on quality. What's more, despite its original playful design you'll find Viewgo gets pretty serious when it comes to your comfort. It's easy to install, making smart use of materials to minimise costs and ergonomically designed with a tough steel construction. Where other entry-level products are cheap, the Viewgo collection is value-for-money.





FORKFISH ✕





Monitor arms

Freeing up valuable room on your desktop and letting you position your monitor the way you know you can work most effectively. Slender yet strong, these monitor arms all have that winning Viewgo formula: playful design, tough steel construction. High quality, value-for-money solutions that leave you sitting pretty in more ways than one.





Computer holders

Making it far less likely any harm will come to your precious computer from dust, spillages, accidental kicks, knocks when cleaning and so on. In other words, this cost-effective solution might well save you much more than just money.



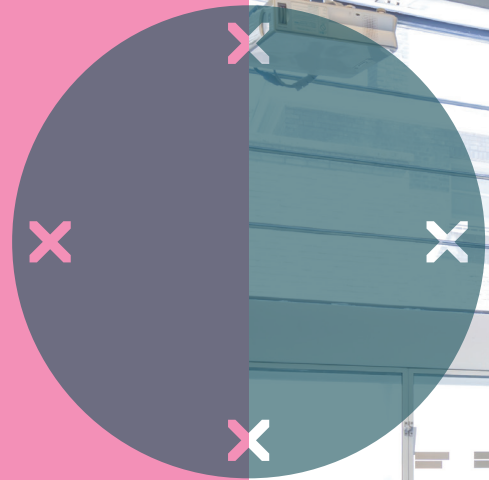
addit^x

So good you forget it's there



Finishing touch Blending in Complementary

You can combine Addit products with any of our other collections to make a good workplace work even better. They tidy away any clutter and let you tailor your workstation to your needs - so you can focus on your job. Simple yet effective solutions designed to complement our entire product portfolio and blend in perfectly with any working environment. Products so good you forget they're there.







Monitor risers

Addit monitor risers lift your monitor to the appropriate eye level. We've also pioneered the use of acrylic, which isn't only strong. Being transparent, it's also aesthetically appealing and appears to take up less desk space. The Addit collection offers you a wide range of risers, each with its own capabilities and applications. Because we realise that your combination of desk, chair, computer and monitor is unique.



Notebook risers

By raising your notebook to eye level, Addit notebook risers facilitate a far better working posture. You can sit more comfortably and don't have to bend forward awkwardly while reading or typing. Easing the tensions on neck, shoulders, arms and wrists. This makes working with your notebook more pleasant, and aids the prevention of RSI and CANS.



Document holders

Addit document holders aren't just convenient. They help you maintain a good posture, which can have major ergonomic benefits too. You can sit comfortably as you read or type without having to tilt your head or lean awkwardly. This eases the tensions on neck, shoulders, arms and wrists, which makes working with documents or notebooks more pleasant and reduces the chance of RSI or CANS.



Posture supports

Obviously a fast computer, good desk and comfortable chair are important. But to turn an OK workplace into your ideal working environment, you need to get the details right. Addit posture support accessories are particularly beneficial to you if you spend hours behind your desk. By helping relieve back, shoulder, wrist and other musculoskeletal complaints, so you're less fatigued and more productive all day.



AV solutions

Few modern offices can do without TVs or beamers. But they occupy a lot of space and are highly vulnerable to theft. Addit AV solutions will often support your equipment out of sight, and let you secure it with ceiling or wall mounts. This enhances the adjustability of your equipment and reduces the chances of theft.





Cable management

Loose cables. They're ugly, distracting and dangerous. Whether running beside your desk or hanging under it, they give a messy impression and are often just an accident waiting to happen. But our cable management solutions don't just make your office look smart. Your workspace also becomes easier to clean and your IT systems easier to manage.



Discover our 100% recycled cable guides

- Tidies away below-desk cables
- Easy to adjust by adding/removing elements
- 100% recycled PP (Polypropylene)
- Made in the Netherlands: Dutch design, Dutch quality
- Eligible for Dataflex return program
- Fully customizable color and length



For more information go to: www.dataflex-int.com/en/cable-guide

A beautifully designed series of ergonomic desktop accessories that help you organise things to fit the way you like to work. Each product offers its own specific benefits and is equally suited for digital devices or printed documents. The Bento® range is available separately or as a set and comes in black or white.

bento.

Designed for the way
we work today.





Addit Bento® Ergonomic toolbox

- A notebook stand, tablet stand, in-line document holder and personal storage box in one!
- Ideal for shared-desk environments, activity-based areas and home offices.
- Organise, store and carry your personal items inside (helping to maintain a clean desk policy).
- Use your notes, documents and all of your favourite devices together ergonomically.

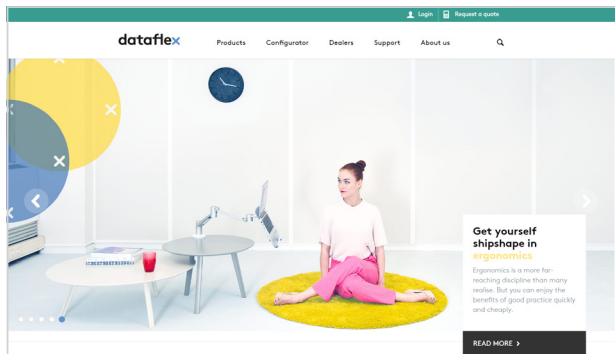
Addit Bento® Monitor stands

- Keeps your monitor perfectly stable and your desk scratch-free.
- Also serves as a handy storage space for the Bento ergonomic toolbox

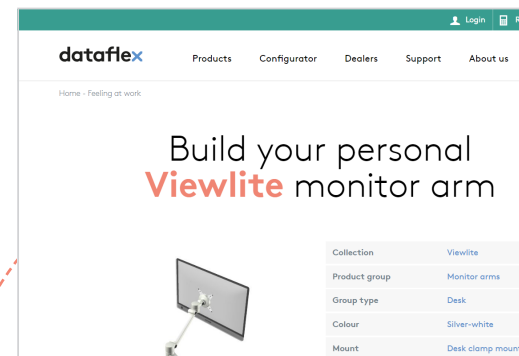
For more information go to: www.dataflex-int.com/en/bento

Your own **bespoke** configurations. As easy as **1,2,3,4.**

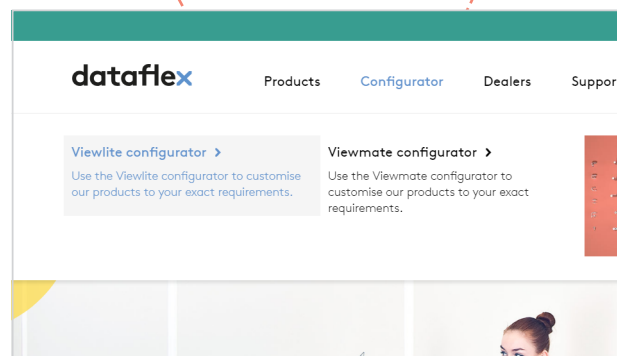
The configurator is an easy to use software tool on our website which lets you pick and choose out of many available parts within our Viewlite and Viewmate collection and helps you combine them into all kinds of unique configurations. With the configurator it's easy to make a monitor arm, toolbar or workstation that perfectly fits your needs.



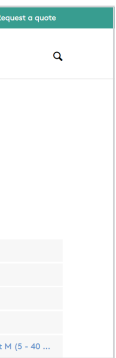
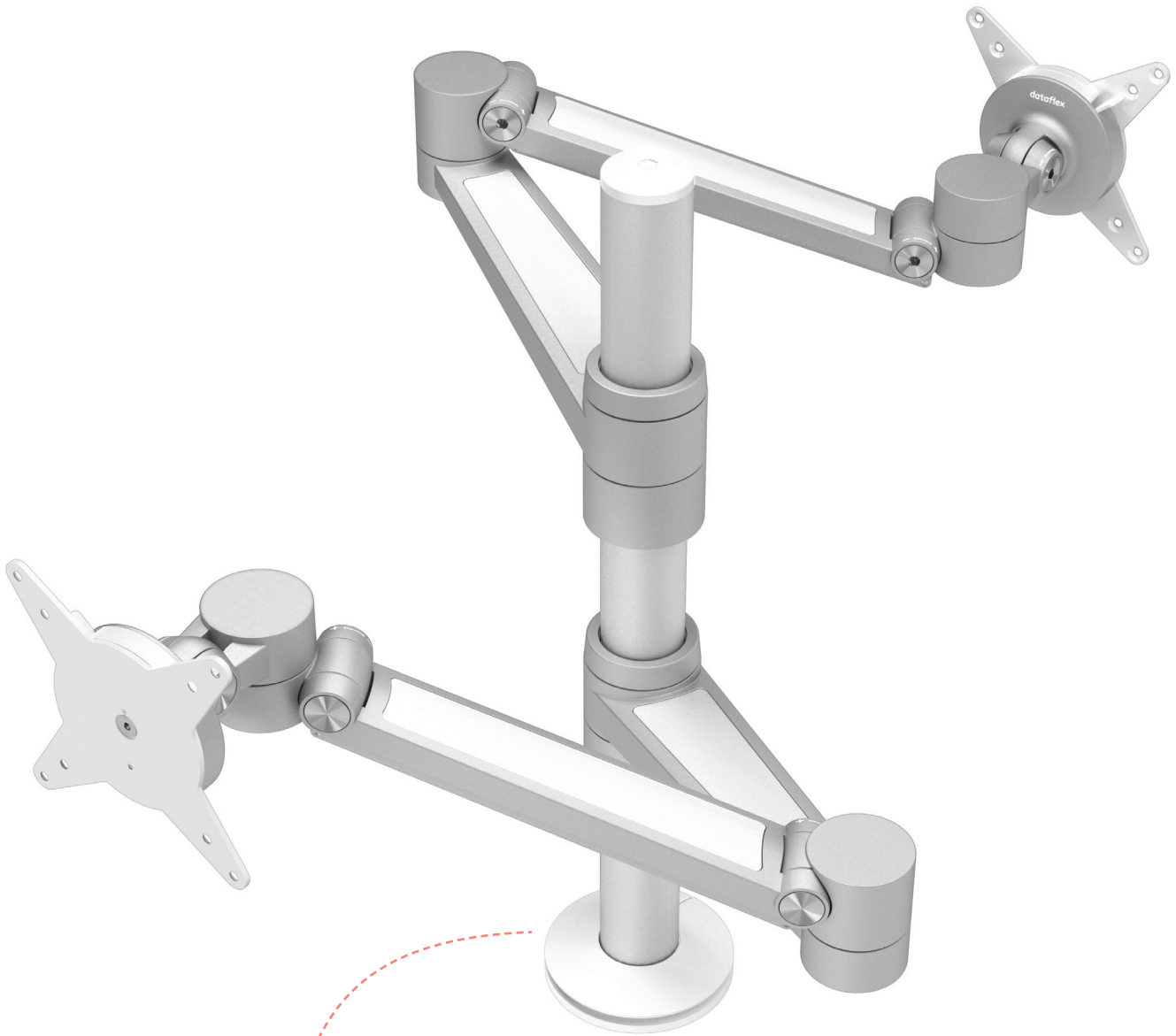
1. Go to www.dataflex-int.com.



3. Mix, match and select the available options to make your perfect configuration.



2. Use the top menu to go to the configurator.



What about pCon / OFML?

pCon
PLANNER

All products available in our configurator are also available in OFML. Contact us for more information or visit our website.

Create your own bespoke solutions with our configurator at www.dataflex-int.com.

Packaging

Individual

Product code

Request a quote

VLTSB10E11

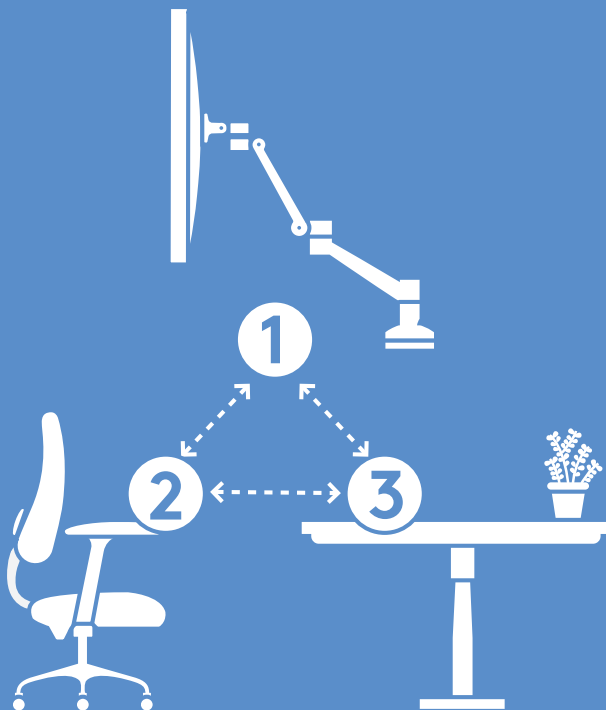
By adding this configuration to your quote request, you can also print or share it with others.

Print

4. Request a quote for your masterpiece or order it online.

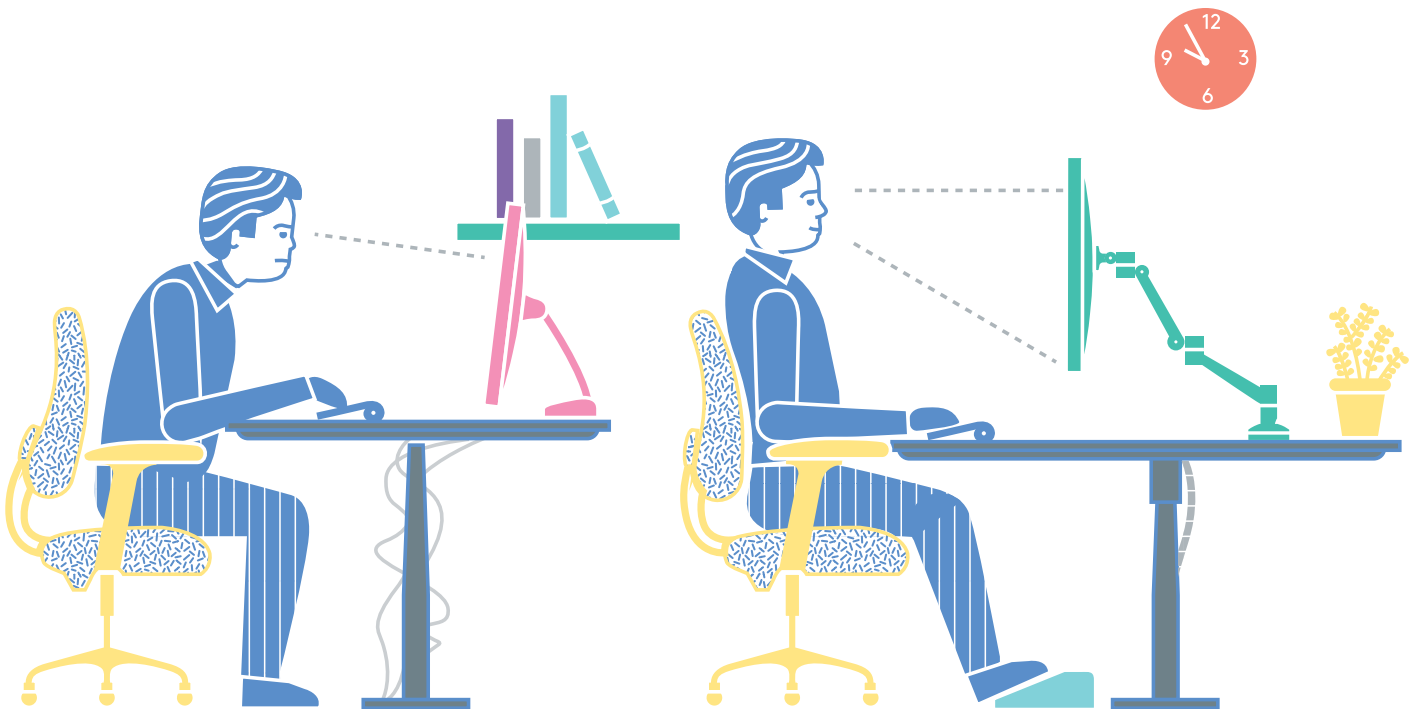
Taking ergonomics seriously

We design ergonomic products to enhance the physical and mental well-being of the people who use them.



1, 2, 3

To achieve a truly efficient, comfortable and healthy workplace, we believe you have to look at ergonomics from a broader perspective. This is why Dataflex designs products that complement ergonomic chairs and desks to form a 'golden triangle' of office ergonomics.



Our driving principles

Underpinning this whole development process are some key Dataflex principles. Products should have a long lifetime, be easy and intuitively to use and modify, and simple to upgrade. No complicated gizmos or instructions.

It all comes back to our core philosophy: begin with people in mind and you won't go far wrong.

The perfect fit

When developing, we put ourselves in your shoes. How do you use our product, where will it fit into your workspace and day? We also consider the wider organisational perspective: is this product as upgradable, modifiable, sustainable and affordable as possible? And is the collection, as a whole, aesthetically versatile enough to fit different office designs and work cultures?

Doing things right, doing things sustainably

The Dataflex core values

- We're honest and transparent, following not just the letter but the spirit of legislation and regulations.
- We look to minimize the environmental impact of our products throughout their lifespan.
- We try to do what's best by all our stakeholders, are open to criticism and seek out partners who share our core values. Why? Because we want to do things even better tomorrow than we do them today.
- Better for those stakeholders, better for the planet and better for society.



We're leaders in our sector when it comes to sustainability issues. Rather than talk, we prefer action and build our efforts around four key environmental programmes:



Life Cycle Assessment

With LCA, we can calculate both the environmental impact of a product's entire life cycle, from mining the raw materials to final disposal, and the exact sources of that impact. This allows us to directly compare the impact of different activities and decide where it's smartest to focus our efforts.



Ecosheets / EPDs

Ecosheets on our website product pages show a product's environmental impact, which means you can make informed choices. For our most popular products, we've also developed EPDs. More detailed than Ecosheets, EPDs are calculated against strict Product Category Rules and checked externally. Helpful for tenders, product planning and your own sustainability goals.



Return Programme

The Dataflex Return Programme is simple: a customer promises to return a product they no longer need and we ensure it's properly recycled. Some 95% of the environmental impact of our products comes from mining raw materials and processing used materials. So recycling those materials will significantly reduce that impact.



CO₂ compensation

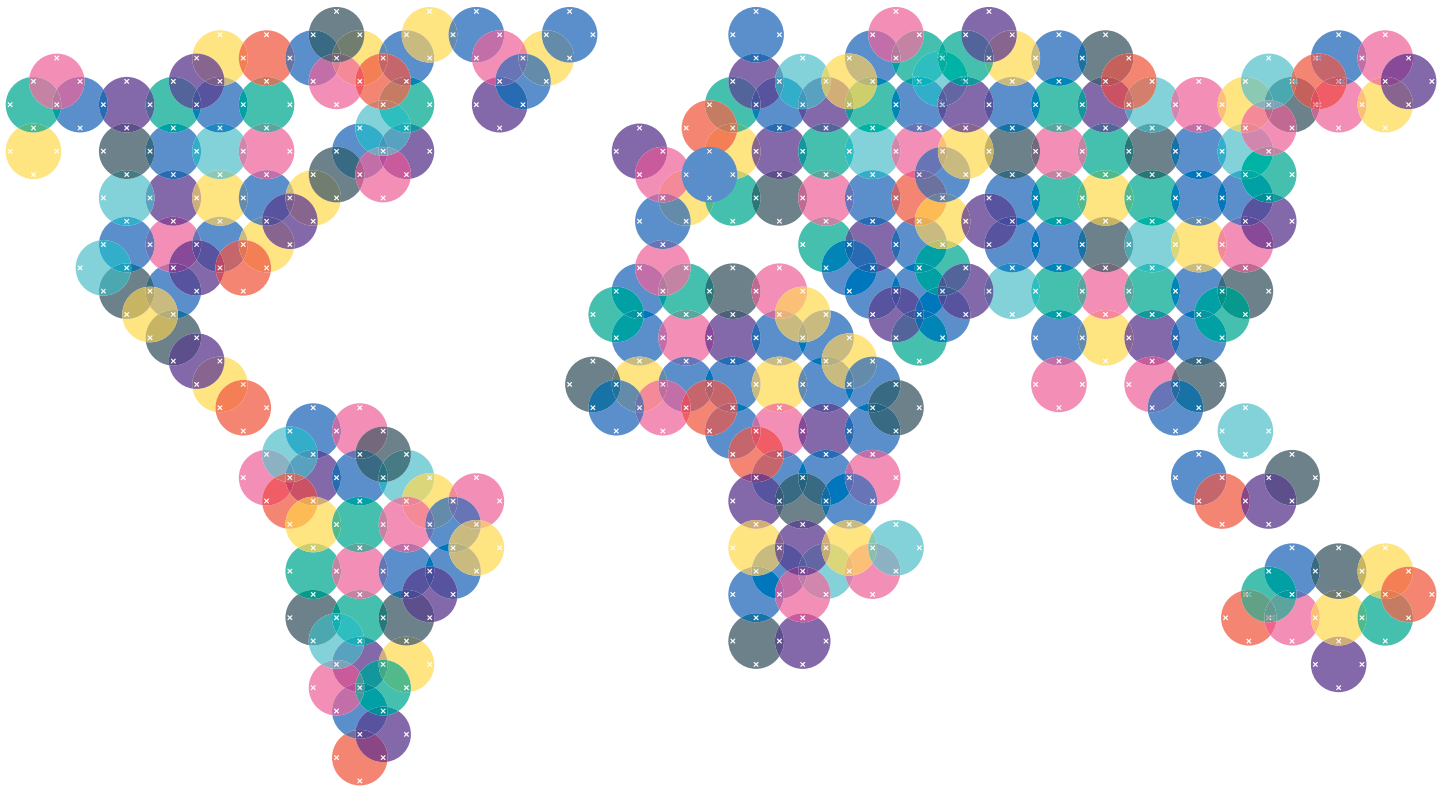
Working with Trees for All, we compensate the CO₂ emissions Dataflex generates as a company by investing in the planting of forests in Uganda. Working with Dataflex means you have a carbon-neutral partner in your value chain.



"We're
carbon
neutral!"

We are international

www.dataflex-int.com



GEN-211217-BR-EN

Dataflex International BV
Global
T +31 180 515444
info@dataflex-int.com


Dataflex Deutschland GmbH
Germany & Austria
T +49 211 17607610
info@dataflex.de

Dataflex France Sarl
France
T +33 134 753738
info@dataflex.fr

Dataflex UK Ltd
United Kingdom & Ireland
T +44 800 0305045
info@dataflex-uk.co.uk

Dataflex Benelux BV
Benelux
T +31 180 530750
info@dataflex.nl

Dataflex Italia Srl
Italy
T +39 346 2233225
info@dataflexitalia.com

 [linkedin.com/company/dataflex---feeling-at-work](https://www.linkedin.com/company/dataflex---feeling-at-work)

 [instagram.com/dataflexfeelingatwork](https://www.instagram.com/dataflexfeelingatwork)

 [pinterest.com/dataflex_feelingatwork](https://www.pinterest.com/dataflex_feelingatwork)

dataflex

feeling at work